

STOCK CLEARANCE BUNDLE

Volkswagen Karmann Ghia Parts

Coachbuilt Classic Spares

386

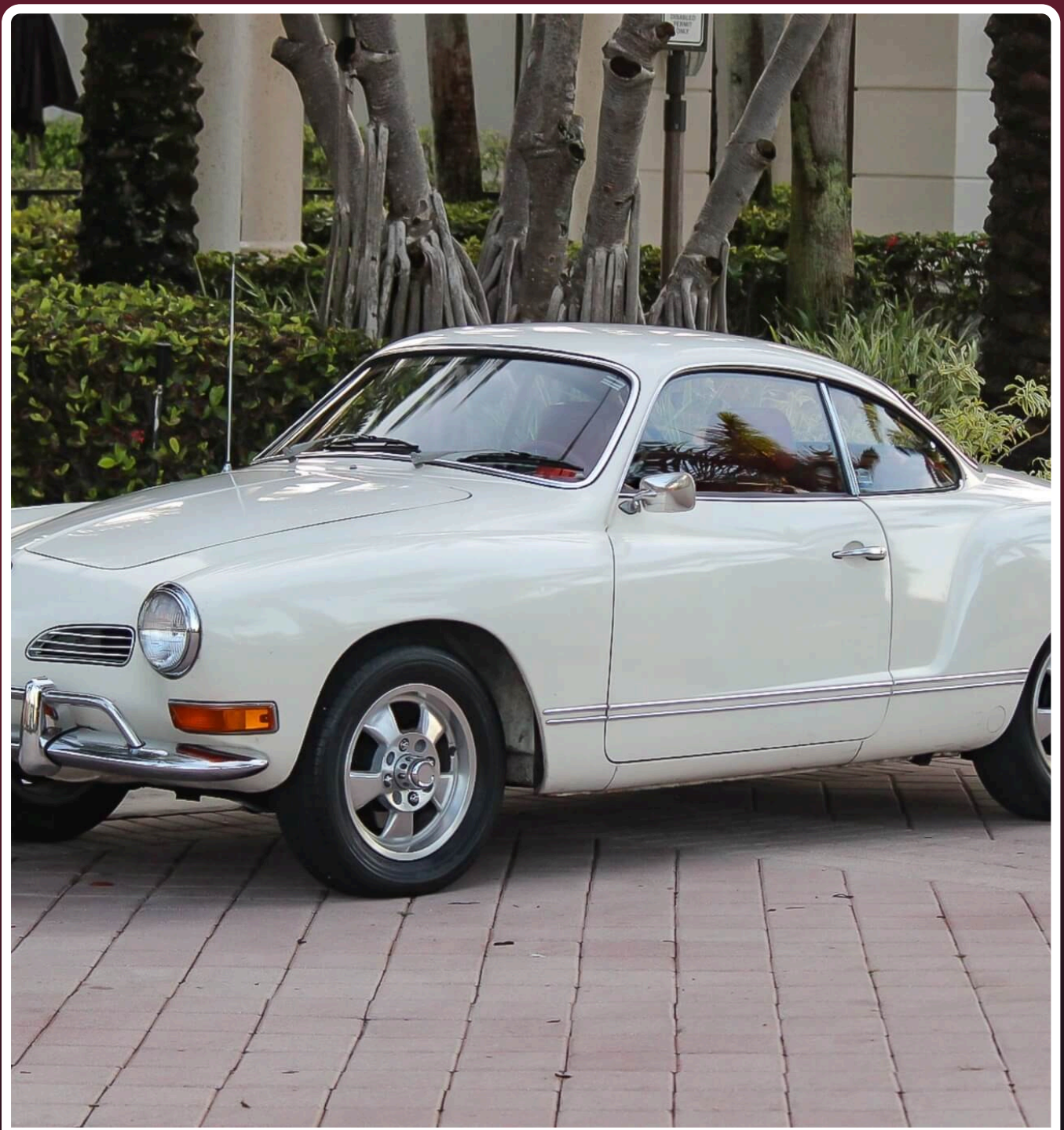
PRODUCT LINES

4,589

UNITS IN STOCK

€34,770

TOTAL RETAIL VALUE



ABOUT THIS BUNDLE

Volkswagen Karmann Ghia Parts

Ghia-specific trim, glass and body parts that restorers struggle to source - a coachbuilt classic with a devoted following.

386 product lines

4,589 units in stock

Retail value €34,770

Related lots also available: other Volkswagen model bundles can be combined for a single buyer.

SPOTLIGHT PRODUCTS

A look at the standout items



Left Heat Exchanger, VW Beetle, Transporter & Ghia (47-62) [111255101C]

Left-side heat exchanger for early Type 1 Beetle, Transporter, and Ghia covering 1947 to 1962 — scarce and in demand.

- Fits VW Type 1 Beetle, Transporter, and Karmann Ghia, 1947-1962
- Designed for the 25hp and 30hp engine variants
- Sold as a pair with the right-side unit (69787)
- Good-quality early heater boxes are hard to source — these fetch close to catalogue price

€265.00 retail value

Qty in stock: 1



Right Heat Exchanger, VW Beetle, Transporter & Ghia (47-62) [111255102C]

Right-side heat exchanger for early Type 1 Beetle, Transporter, and Ghia covering 1947 to 1962 — equally scarce as its left-side counterpart.

- Fits VW Type 1 Beetle, Transporter, and Karmann Ghia, 1947-1962
- Designed for the 1.2 engine in the 25hp and 30hp configuration
- Sold as a pair with the left-side unit (28334)
- Early VW heater boxes rust out frequently and are difficult to find in good condition

€265.00 retail value

Qty in stock: 1



Dansk 36hp Dual-Outlet Muffler, Beetle & Karmann Ghia (55-60) [111251051G]

Dansk-made 36hp dual-outlet muffler for 1955 to 1960 Beetle and Karmann Ghia — currently sold out and discontinued at the major US supplier.

- Fits 36hp VW Beetle and Karmann Ghia, approximately 1955-1960
- Manufactured by Dansk, a recognised name in early VW exhaust supply
- Dual-outlet configuration correct for the 36hp engine
- J Bugs lists this as sold out with no restock planned — available stock is finite
- OE part number 111251051G for cross-referencing

€258.00 retail value

Qty in stock: 2



Right Heat Exchanger, 36hp VW Beetle (60-62) [113255102]

Right-side heat exchanger for the 36hp VW Beetle from 1960 to 1962, where good-condition units are consistently hard to find.

- Fits 36hp VW Beetle, 1960-1962
- Earlier 36hp units are scarcer than the later 40hp equivalents
- OE part number 113255102 for confirmed fitment
- Pairs with the left-side unit (28292) for a complete heater box replacement

€240.00 retail value

Qty in stock: 2



Left Heat Exchanger, 36hp VW Beetle (60-62) [113255101]

Left-side heat exchanger for the 36hp VW Beetle from 1960 to 1962, with genuine scarcity and demand from Beetle and Karmann Ghia restorers.

- Fits 36hp VW Beetle, 1960-1962
- Karmann Ghia restorers are among the primary buyers for this period
- Harder to source than the later 40hp equivalents
- OE part number 113255101 for confirmed fitment
- Pairs with the right-side unit (28290) for a complete heater box restoration

€240.00 retail value

Qty in stock: 2



Deluxe Water-Resistant Custom Car Cover, Karmann Ghia

A custom-fit deluxe car cover for the Karmann Ghia, with a thick water-resistant outer and soft inner lining to protect the bodywork.

- Custom-fit for the Karmann Ghia body shape
- Thick water-resistant outer layer with a soft inner liner
- Protects paintwork from moisture, dust, and light abrasion in storage
- Viborg (Denmark) manufacture

€230.00 retail value

Qty in stock: 2



Door Card Set, Black, Karmann Ghia 1955-1974 [141898320B]

A complete four-piece door card set for the Karmann Ghia in black, covering the full production run from 1955 to 1974.

- Fits Karmann Ghia 1.2-1.6, 08/55-07/74
- Complete set of four panels — no additional door card sourcing required
- Black, no trim, no cutouts — correct base for period interior restoration
- OE part number 141898320B for fitment verification
- Complete interior sets for the Karmann Ghia are sought after and hold value

€220.00 retail value

Qty in stock: 2



Door & Quarter Panel Card Set, Black, Karmann Ghia (63-74) [141898300]

A four-piece black door and quarter panel kit for the Karmann Ghia from 1963 to 1974, with pockets and no trim cutouts.

- Fits Karmann Ghia 08/63-07/74
- Includes door panels and quarter panels — four pieces total
- Black, without trim, with pockets — correct configuration for this production period
- OE part number 141898300 for cross-referencing
- Catalogue price aligns with current market rates for this interior set

€220.00 retail value

Qty in stock: 2

Every part in this bundle

All 384 product lines, grouped by category. 'Retail' is the independent market valuation per item. Quantities are units in stock.

Karmann Ghia Electrical

36 lines · €2,582

ITEM	QTY	RETAIL
8-pole OEM fuse box with cover for 1960–1966 models	5	€55.00
12V 380 Hz horn with E-mark approval, classic Bosch design.	1	€47.00
Voltage regulator for Bosch alternator integral.	1	€32.00
Wolfsburg logo horn pad cap, original cosmetic trim piece.	2	€24.00
Classic-style 12V horn with black and chrome finish; ideal for restorations and	2	€22.00
Ignition switch with four wires OE part for classic VW vehicles. 311905865A	1	€20.00
Battery earth strap, grounding cable for Beetle, T2, T3, LT, Polo	9	€18.50
6V horn, top quality OEM electrical component	6	€15.26
Brazil 12V alternator pulley, OEM fitment standard	1	€15.00
Horn ring mounting kit, hardware assembly for pad installation	3	€13.50
Battery earth strap ground connection 14 inch	7	€13.50
Horn ring kit, plastic horn pad assembly for steering wheel	1	€11.05
Stainless steel dynamo cover for all 12-volt generators; durable corrosion prote	3	€11.00
Bosch or Beru ignition points; standard reproduction contact breaker.	15	€10.50
Transaxle to chassis earth strap, electrical grounding cable	2	€10.00
Early T1 distributor cap 60-64; black short 85mm, era-correct reproduction.	14	€9.60
Distributor condenser round plug, commodity ignition component.	3	€9.50
Bosch distributor condenser vacuum round plug; electrical ignition component.	4	€9.00
Rubber headlamp wire protection tube, OE harness shield.	6	€7.75
Distributor rotor; aftermarket ignition component, reliable reproduction.	3	€7.50
Vacuum unit for distributor; controls ignition timing with engine load.	13	€7.00
Brush set 6-Volt dynamo 90mm electrical.	48	€6.00
Carbon brush repair set 4-piece 12V starter.	45	€6.00
Backup light switch for reliable reverse illumination	14	€5.65
Gold zinc alternator strap 12V fastening.	2	€5.00
Wing and headlamp seal pair, OE weatherstrip protection.	2	€5.00
Universal headlight switch knob for simple replacement	7	€4.02
Starter cable grommet floor pan penetration; rubber protective pass-through.	10	€3.95
Bosch 6-volt coil and door-pillar identification sticker.	4	€3.75
Rubber spark plug cap seal; ignition system consumable part.	25	€3.00
Generator pulley alternator nut fastener.	84	€2.00
Spacer cup generator thrust washer.	5	€2.00
Distributor shaft seal; prevents oil leaks from ignition system.	8	€2.00
6V 21W BA15S indicator bulb for turn-signal applications	12	€2.00
Cooling fan generator pulley shim 0.5mm.	14	€1.00
Headlamp rim screw; small fastener hardware for lighting restoration.	81	€1.00

Front Axle -Brakes-Wheel bearings -Suspension KG

21 lines · €2,301

ITEM	QTY	RETAIL
Custom 2.5-inch dropped spindle for pre-1966 Beetles; performance suspension upg	1	€110.00
Classic Beetle front shock absorber with factory top mount; 1965-1979 T1 restora	1	€90.00
Four-piece link pin set for pre-1966 Beetle front axle; essential restoration pa	6	€83.00
Oil-charged front shock pair T1 1965-1979, commodity available.	2	€74.00
Gas-charged front shock pair T1 1965-1979, performance upgrade.	2	€74.00
Right LHD tie rod assembly T1 1960-1968, standard steering.	4	€55.00
COFAP front shock absorber for Type 1 1302/1303.	4	€38.00
Front axle beam repair pair sheet-metal sections; suspension rebuild section.	2	€28.00
T1 front shock rubber mount kit pair, low value, available.	2	€25.00
Taper roller wheel bearing inner and outer front axle.	3	€25.00
Disc-brake splash shield (left/right) protects brake components.	2	€18.50
Torsion bar bushing fibre, front axle beam wear item	9	€17.50
Stabilizer bar mounting kit both sides through 1965	1	€11.50
Precision front wheel bearing outer, quality standard fitment.	19	€11.00
Stub axle clamping nut with screw, left 1965+, OE hardware.	10	€10.00
Front axle suspension travel stop, standard rubber component.	8	€5.00
VW hub cap puller tool; OE factory accessory for wheel cap removal. 211012243	21	€5.00
Front axle torsion arm seals upper and lower pair.	4	€3.90
Brake caliper bleed nipple 7mm; bleeder consumable.	6	€3.00
M14 wheel bolt for T1 Beetle, T1/T2 Transporter, T25.	20	€2.50
Fastener cover plug for brake back plate assembly.	8	€1.25

Karmann Ghia Safety & Security

23 lines · €2,055

ITEM	QTY	RETAIL
Front seat belt 3-point inertia modern buckle; commodity safety retrofit.	2	€72.50
Safety seat belt bracket kit for dual lap belt installation.	1	€48.00
5-pin black wiper/washer switch for late-Beetle fitment	2	€45.00
Early ivory indicator switch for pre-1965 Beetle and Karmann restoration	8	€45.00
Ivory lap belt 2-point safety item pre-1979, niche colour variant.	1	€45.00
License plate bracket OE 111707999, standard fitment	4	€20.00
Quarter and vent window latch, left side fitment.	5	€15.00
Quarter and vent window latch, right side fitment.	8	€15.00
Bonnet lock carrier lower part; premium quality assembly.	4	€15.00
Bonnet lock mechanism upper assembly with button control.	18	€12.50
Wiper and washer switch valve, electro-mechanical control component	3	€11.50
Ivory wiper switch knob for authentic vintage interior detail	7	€10.00
Door striker plate for left side ensuring positive latch engagement.	5	€10.00
Right-side door striker plate completing matched pair hardware.	5	€10.00
Door striker plate left side; precise latching alignment.	7	€8.50
Door striker plate right side; original fitment specification.	7	€8.50
Long white grab strap interior safety hardware.	13	€8.00
Black dual-function knob for headlight and wiper switches	7	€7.50

ITEM	QTY	RETAIL
M14x1 dashboard switch escutcheon nut for headlight installation	13	€6.00
Wiper shaft bearing cover pair for shaft support	10	€5.30
Washer jet pair, black plastic nozzles, standard fitment	30	€5.00
Tire pressure specification reference sticker.	9	€3.75
Wiper shaft rubber grommet for 1964-1969 models	8	€1.50

Gear Shift and Linkage Beetle KG and similar

14 lines · €1,911

ITEM	QTY	RETAIL
Clutch operating shaft repair kit common wear item for Type 1.	12	€16.00
Ball housing shift linkage assembly for precise manual transmission engagement.	8	€15.00
Ivory white reproduction gear shift knob, 7mm.	4	€9.00
Shift rod coupling linkage connector.	1	€8.50
Stamped steel gear shift rod bracket and guide.	33	€7.50
Retaining clip pair for clutch release bearing.	38	€6.00
Black rubber gear shift lever gaiter boot.	1	€5.00
Pressure spring for gearshift lever, 1952–2003 model range.	42	€5.00
Shift coupler bushing OE rubber; manual transmission linkage absorber.	95	€4.75
Gearshift knob black plastic; standard manual shifter topper replacement.	4	€4.00
Gearshift knob with shift pattern decal for manual transmission control.	7	€3.95
Transmission shift lever bushing wear-resistant replacement part.	89	€3.50
M8x14 metric bolt for gearshift coupling.	20	€2.50
Retaining snap-ring for shift guide bushing; essential mechanical connector.	5	€1.50

Front Brakes Karmann Ghia

15 lines · €1,729

ITEM	QTY	RETAIL
Front brake disc with bearing housing T1 9.5mm, complete hub assembly air-cooled	2	€135.00
Karmann Ghia/early Beetle front drum 230x47mm 5-hole, moderate volume.	3	€76.00
Early Bus/T1 front brake drum 230x48mm 5-hole, steady demand.	2	€70.00
Front brake drum 230x47mm 4-hole, standard Beetle 68–77 commodity.	2	€42.00
ATE brake caliper kit 1971 onward; covers Beetle and Karmann Ghia.	2	€39.00
Standard brake line kit, consistent low-cost demand from restorers.	2	€38.00
ATE brake caliper seal kit; fits Beetle through 1971 and some Ghia models.	5	€32.00
Beetle/Karmann Ghia brake shoe set 230x30mm front/rear, very common.	2	€25.00
Front brake pad set 16.3mm, premium lining, market-rate catalog.	2	€24.50
Girling brake caliper rebuild kit for Beetle and Karmann Ghia.	3	€20.00
Front brake pad set 15mm, smaller lining, lower-cost option.	2	€13.50
Front wheel cylinder 19.05mm, early Beetle drum brake standard.	10	€11.00
Front brake hose 433/440mm drum brake, T1 Beetle/Transporter standard.	9	€10.00
Brake shoe adjusting screw, hardware component, standard pricing.	13	€3.00
Grommet for brake/fuel lines to body, OE rubber component.	134	€2.00

Pedals & Controls gearshift

24 lines · €1,711

ITEM	QTY	RETAIL
Complete LHD pedal assembly; moderate demand for restoration builders.	2	€120.00
LHD brake and clutch pedal cluster bracket assembly	3	€99.00

ITEM	QTY	RETAIL
Gear shift rod, standard transmission linkage.	4	€45.00
Accelerator pedal kit 66-79; high-turnover restoration commodity part.	1	€26.00
Handbrake cable pair for 1302 Super Beetle.	3	€25.00
Handbrake cable for Beetle/Ghia 1964–1967.	1	€25.00
Handbrake cable pair for Beetle 1967–1972.	1	€25.00
Pair of handbrake cables for Beetle 1955–1957.	5	€20.00
Early Beetle right-hand drive speedo cable 1575mm through 1964	1	€16.50
OE-quality handbrake cable for Beetle 1972–1979.	1	€15.00
Accelerator cable protective rubber tube.	8	€11.75
Early clutch cable 2250mm, 1960-1961 Type fitment	3	€10.00
T1 handbrake handle ivory; vintage color restoration upgrade.	1	€8.75
Speedo cable 57- screw-in type; fits early Beetle models.	17	€8.50
Heater cable for Beetle/Ghia 1972–1979.	5	€7.50
Black heater control knob 1952-1964; genuine OE trim.	3	€7.50
Heater cable for Beetle 1962–1964.	4	€6.50
Rear seat heater cable for classic VW 1972–1979.	8	€5.30
German OEM accelerator pedal rubber; authentic consumable replacement.	3	€4.50
Accelerator cable rubber conduit tube guide	7	€3.95
Parking brake distance bar left side; bracket assembly component.	16	€3.75
Parking brake lever right side; matched control mechanism bracket.	14	€3.75
Accelerator pedal rubber pad wear replacement	42	€3.50
Parking-brake lever circlip; essential parking-brake hardware.	5	€1.00

Karmann Ghia Window & Body Seals

17 lines · €1,311

ITEM	QTY	RETAIL
Top door window seal right, Karmann Ghia coupe; complex shape, specialist pricin	1	€135.00
Pre-66 Karmann Ghia rear window seal with chrome molding groove.	2	€130.00
1966–1974 Karmann Ghia rear window seal rubber gasket.	1	€105.00
Karmann Ghia front bonnet seal, 1955 onward fitment	3	€74.00
Door window weatherstrip, 1965+ Karmann Ghia coupe; rubber seal, commodity avail	1	€65.00
Pop-out window seal, Karmann Ghia coupe 1959+; steady demand, multiple sources	3	€45.00
Door seal left Karmann Ghia 1955-1974; niche model weather strip.	1	€42.00
Door seal right Karmann Ghia 1955-1974; niche model weather strip.	1	€42.00
Door glass weatherstrip and scraper set; small seal kit, high-turnover item.	1	€25.00
Window rubber molding pair 1967-on restoration trim.	1	€22.36
Outer window scraper trim, Karmann Ghia; specialty chrome, catalog-standard pric	1	€17.50
Window frame adjusting bolts; 2-pack fastener hardware.	2	€15.00
Engine compartment seal Brazil; OE chassis gasket component.	1	€11.50
Chassis rubber drain valve, small component for moisture relief.	3	€4.75
Wiper shaft seal pair for T1 Beetle and Karmann models	1	€4.00
Bonnet handle gasket upper 67-79, OE specification.	46	€2.00
Door hinge bolt plug, commodity fastener hardware.	88	€1.00

Karmann Ghia Tail Lights

4 lines · €1,112

ITEM	QTY	RETAIL
Tail lamp gasket pair for Karmann Ghia and Type 3	21	€35.00
Tail lamp gasket 1959-1969 Karmann Ghia; rubber seal pair.	30	€10.98
Tail lamp gasket set 1959-1969 Karmann Ghia; complete rubber seal set.	5	€6.10
License plate light gasket USA; rubber seal light housing.	3	€5.65

Carburettor Rebuild Kits-Gaskets-Parts

11 lines · €1,108

ITEM	QTY	RETAIL
6V choke element for pre-1967 Beetles; period-correct early-car upgrade.	1	€42.00
28-30 PICT carburetor repair kit for pre-1971 Beetle restorations.	18	€32.00
Idle cut-off solenoid valve 55G 12V; Solex carb emission control.	1	€28.00
12V automatic choke element for 30/34 PICT carburetors on late Beetles and Buses	3	€25.00
Universal carburetor repair kit 28-34mm PICT.	1	€22.50
31 PICT 4 carburetor repair kit; complete rebuild solution for Beetle carbs.	6	€22.00
Carburetor adapter kit for precise fuel delivery and engine tuning.	2	€15.00
55G solenoid idle cut-off valve 12V 1964-1970; functional emission equipment.	6	€15.00
30/34 PICT solenoid idle cut-off valve 12V; emission control component.	3	€12.50
G55 pilot jet; idling speed adjustment component for smooth engine startup.	5	€10.50
Carburetor throttle return spring; genuine OE German engineering for reliability	18	€1.25

Karmann Ghia Body Panels

10 lines · €990

ITEM	QTY	RETAIL
Complete frame head for 65-79 Beetle body.	1	€215.00
Ghia left wheel well support panel; structural repair, floor-to-fender fitment.	1	€80.49
Beetle seat rail and runner pair through 1970	1	€60.00
Karmann Ghia sill end right; Ghia-specific body repair section.	1	€52.00
Cabrio-specific rocker panel reinforcement; rust-prone area, steady restoration	1	€40.00
VW washer bottle recess repair piece for spare wheel panel	1	€25.00
Small inner rear panel front section, left side	1	€12.50
Thrust washer for wheel bearing axle spindle assembly.	59	€5.00
Chassis rubber shock pad mounting block, 17mm lower	30	€3.00
Front chassis rubber shock pad, upper suspension mount	40	€3.00

Door-Bonnet-Decklid hardware

22 lines · €970

ITEM	QTY	RETAIL
Matching keyed door handle and ignition lock set for Beetle convenience.	1	€47.00
Chrome door handle kit T1 67-79, high-volume fitment.	1	€28.00
Chrome door inner operating lever left; interior hardware.	1	€19.00
Chrome door inner operating lever right assembly.	2	€19.00
Chrome metal door pull screen; visible interior trim upgrade.	8	€17.50
Walnut knob window winder T1 Golf; premium aesthetic.	1	€16.00
Hood/bonnet release handle, glove-box cabin fitment.	4	€13.95
Door striker stop plastic; simple latch plate guide component.	15	€9.00
Inner door handle left/right; classic interior trim piece.	18	€7.50
Inner door operating lever left; interior hardware assembly.	4	€5.75
Black inner door operating lever right side assembly.	5	€5.75

ITEM	QTY	RETAIL
Door hinge pin +0.20mm oversize, left/right, OE spec.	8	€4.50
Rubber striker plate wedge Beetle/Type 3/Bay; universal alignment shim.	20	€4.50
Black door lock knob for Beetle and Golf interiors.	1	€4.30
Glove box and fuel filler rubber buffer; consumable protective pair.	11	€3.50
Door hinge pin standard size replacement, left/right.	6	€3.00
Door pull screen plastic black; interior trim component.	8	€3.00
Bonnet handle gasket lower 67-79, OE specification.	10	€2.00
Door handle fixing screw Allen key type; bulk commodity fastener.	20	€1.59
Rubber seal for door check strap prevents rattle and wear.	6	€1.50
Rear door handle plastic gasket, small-part fitment.	14	€1.00
Outer door handle gasket front 1967-80, basic consumable seal.	19	€1.00

Body Seals & Hardware TYPE 3

13 lines · €884

ITEM	QTY	RETAIL
Set of four chrome hub caps no-logo; commodity cosmetic wheel trim set.	2	€85.00
Speedo cable 1167mm for Karmann Ghia and Type 3 models	7	€20.00
Stainless metal cover for left heating flap.	2	€15.00
Stainless metal cover for right heating flap.	2	€15.00
Chrome bumper bolt 8x15mm, set of 10 pieces	10	€15.00
Fender mounting kit for single wing; assembly fastener set complete.	10	€7.00
Seat backrest knob pair black; interior hardware upgrade.	16	€6.00
Front seat tilt handle securing clip pair, plastic	2	€3.00
Antenna hole cover trim piece for clean body finish.	3	€2.50
OEM frame fastener; chassis assembly hardware	30	€1.50
OE pointed chassis bolt, VW fastener hardware.	44	€1.25
VW emblem seal and plug set 3-piece; consumable fastener trim.	35	€1.00
Badge clip 3mm, script badge mounting fastener.	49	€1.00

Karmann Ghia Headlights US

11 lines · €830

ITEM	QTY	RETAIL
6V electrical relay, 40A capacity, specialist component for air-cooled models	5	€32.00
Dashboard-mounted headlight switch with rheostat dimmer function	19	€22.50
Beetle headlight switch with rheostat for original-spec restoration	1	€13.00
Metal 6V battery strap, OE style reproduction	1	€10.00
M10x1 dashboard switch escutcheon nut for headlight fitment	3	€5.00
Aluminum billet-style knob for headlamp and wiper switches	2	€5.00
Karmann Ghia headlamp sealing ring protecting bulb assembly from water.	10	€5.00
Black headlight switch knob with insert for authentic restoration	13	€4.50
Plastic trim cap for headlight switch knob	15	€3.50
Headlamp rubber mount with beam adjuster, hardware component.	4	€2.25
6V 4W BA9S side lamp bulb for vintage European vehicles	16	€1.50

K Ghia Mirror & Door Handles

7 lines · €781

ITEM	QTY	RETAIL
Right outer rear-view mirror, Karmann Ghia 1967+; chrome finish, reproduction co	1	€72.00

ITEM	QTY	RETAIL
Chrome mirror holder pair for left and right exterior fitment.	2	€20.00
Door mirror base seal rubber kit two-piece assembly.	87	€5.00
Black seat belt retaining hook securing belt routing and positioning.	28	€2.50
White seat belt hook variant for interior trim color matching.	24	€2.50
Check strap pivot pin, OE VW specification.	33	€2.25
Door hinge pin plugs set, 2-piece hardware assembly.	30	€1.00

Karmann Ghia Front Indicator

9 lines · €753

ITEM	QTY	RETAIL
Type 3 indicator switch for VW Type 3 vehicles	2	€38.00
Round yellow side marker Karmann Ghia Type 3; niche fitment.	2	€29.50
Complete wiper switch knob and insert assembly	3	€17.50
6V turn signal and hazard warning relay, standard electrical component	1	€15.00
Turn signal flasher relay 4-pin 500W, 1968-1970 fitment	8	€14.50
Ivory turn-signal switch knob for classic color-correct restoration	20	€5.00
Cable conduit sleeve protecting wiring from headlamp to body panel.	47	€5.00
Black turn-signal switch knob for standard Beetle applications	19	€4.50
OE-specification headlamp drain tube for all classic VW Beetles.	4	€3.50

Transmission -Clutch- Cables sorting Type 3

10 lines · €748

ITEM	QTY	RETAIL
200mm classic clutch kit with disc and bearing.	1	€110.00
Reverse selector fork for transmissions; internal gearbox component for rebuilds	1	€27.50
Cast clutch operating lever arm assembly.	16	€15.00
Heavy-duty front gearbox mount for engine alignment.	6	€13.50
Clutch operating shaft and release mechanism.	6	€12.00
Precision synchro ring for transmission 1st/2nd gear.	9	€10.00
T1 handbrake handle black; OEM color specification variant.	2	€8.00
Fuel filler door pull handle and release cable assembly.	18	€3.90
Gear carrier hockey-stick nose gasket for gearbox sealed assembly.	26	€1.50
Reverse light switch seal 18x24; rubber gasket for rear lamp	2	€1.10

Fuel Type 3 see Type 1 & weber also

11 lines · €708

ITEM	QTY	RETAIL
Fuel hose 5m OD 10mm, bulk fuel system plumbing commodity consumable replacement	7	€20.00
Fuel filler ventilation hose; specialty component for complete fuel system resto	1	€16.40
Accelerator pedal repair kit variant; assembly component.	3	€12.50
Period-correct fuel filler neck hose; authentic OE fitment for classic Beetles.	1	€11.50
Metal fuel tank cap; original spec for Porsche and VW classic models.	1	€10.00
Fuel sender unit gasket; precision seal for tank-to-gauge connection.	1	€10.00
OEM steel fuel line pipe for 1961-1974 models	28	€8.50
Early-model air filter OEM identification sticker.	12	€6.00
100mm push-rod fuel pump for alternator engines; OE replacement component.	28	€5.00
Inline fuel filter 251201511G, compact OE component for carburetor feed.	1	€5.00
Fuel filler pipe gasket; seals connection and prevents internal fuel leaks.	8	€3.50

Rear Brakes Karmann Ghia

8 lines · €651

ITEM	QTY	RETAIL
Early Beetle/Karmann Ghia rear drum 230x43.5mm 5-hole, consumable.	2	€62.00
Beetle/Karmann Ghia rear brake shoes 1964+, most common consumable.	1	€28.00
Wheel cylinder 19.05mm rear CLASSIC; standard Beetle brake component.	6	€18.00
Rear wheel cylinder 19.05mm for 1964–69 Beetles, proven design.	1	€12.50
T1 1957–1967 rear brake-shoe hardware kit.	4	€10.00
Porsche 914 rear swing axle brake hose 276mm, OE assembly.	2	€10.00
Spring clip fastener for handbrake push rod.	27	€3.95
Handbrake anchor pin for parking brake lever mounting.	141	€1.50

Heating Cooling Ventilation Type 3

8 lines · €607

ITEM	QTY	RETAIL
Heater blower motor switch for interior climate control	2	€25.00
Warm air hose 38x1080mm cardboard-wrapped, larger diameter option.	7	€15.00
Warm air hose 47.5x1080mm cardboard-wrapped, largest diameter option.	4	€15.00
Cardboard heater hose 32x1080mm OEM spec, standard replacement pricing.	4	€8.50
Warm air preheater hose, generic heater tubing.	12	€7.00
51mm heat exchanger clamp; OEM fastener for hot air pipe assembly.	78	€3.00
Cable boot grommet for accelerator and heater cables	10	€3.00
Mounting kit for heater cable with small hardware assembly.	4	€2.50

Inlet Manifolds Standard or Stock - see WEBER fo

8 lines · €442

ITEM	QTY	RETAIL
30mm dual-port intake manifold with pre-heat; Euro-spec upgrade for better flow.	1	€130.00
31mm single-port intake manifold 1966-1970; common 1300-1600cc Beetle fitment.	1	€104.00
Air supply hose 50x500mm filter connection; OE engine intake assembly.	2	€19.50
Manifold boot kit silicone with clamps, engine seal set.	1	€15.00
Red silicone manifold boot heavy-duty air intake upgrade.	2	€5.75
Black silicone manifold boot standard air intake engine seal.	10	€4.25
Triangular exhaust gasket 1.2cc 111251253A, heat-resistant combustion seal.	20	€2.50
Sump plug seal washer for Beetle/Golf Mk3/T4; commodity part.	25	€2.00

Other parts (mixed)

102 lines · €10,588

ITEM	QTY	RETAIL
Left Heat Exchanger, VW Beetle, Transporter & Ghia (47-62) [111255101C]	1	€265.00
Right Heat Exchanger, VW Beetle, Transporter & Ghia (47-62) [111255102C]	1	€265.00
Dansk 36hp Dual-Outlet Muffler, Beetle & Karmann Ghia (55-60) [111251051G]	2	€258.00
Right Heat Exchanger, 36hp VW Beetle (60-62) [113255102]	2	€240.00
Left Heat Exchanger, 36hp VW Beetle (60-62) [113255101]	2	€240.00
Deluxe Water-Resistant Custom Car Cover, Karmann Ghia	2	€230.00
Door Card Set, Black, Karmann Ghia 1955-1974 [141898320B]	2	€220.00
Door & Quarter Panel Card Set, Black, Karmann Ghia (63-74) [141898300]	2	€220.00
Chrome front vent grilles for 1960-74 Karmann Ghia; in-demand reproduction pair.	1	€150.00
Black sun visor kit for Karmann Ghia 1.2-1.6.	2	€140.00
Hella chrome reversing light; desirable Beetle and T2 backup lamp.	1	€110.00

ITEM	QTY	RETAIL
Jopex TÜV-approved exhaust for Beetle 1200cc, certified E-mark quality.	3	€108.00
OE Bosch voltage regulator 12V for T1.	1	€85.00
Front overrider bumper guard, Karmann Ghia 1955–1971; structural chrome fixture.	4	€82.00
White sun visor kit for Karmann Ghia.	2	€80.00
Grab handle armrest pair black interior door.	2	€65.00
180mm classic clutch pressure plate, OEM variant.	1	€60.00
Mechanical fuel gauge with cable by VDO; original-style gauge for T1 Buses.	5	€55.00
Used heat exchanger pair, left and right, 1600cc era.	2	€50.00
12-way VW Beetle fuse box with cover, popular electrical upgrade	10	€45.00
Front wheel bearing kit Beetle/Ghia 1955-1965, king-pin era.	2	€45.00
Black warm air pipe for Beetle/T1/T2/Ghia, prevents filter icing.	1	€45.00
Karmann Ghia center divider heater channel panel; body structure, moderate deman	1	€45.00
Early Bay and Mexico-spec T2 fuel sender; narrower fitment for collector models.	5	€42.00
Rubber air intake elbow from oil-bath cleaner to carburettor, T2 Bay 1968–75.	4	€32.00
Air-cooled VW carburetor adapter kit, moderate performance/carb.	1	€32.00
Fuel gauge cluster insert 1967-1979 Beetles; period-correct gauge for dashboard.	2	€28.00
OE-style fuel pump for 1.2-1.6L T1 engines with alternator charging.	1	€28.00
3-pin brake light switch for universal Volkswagen fitment	2	€28.00
Window scraper clip set Karmann Ghia 1972-1974; hardware fastener kit.	6	€25.00
Fuel pump mounting flange 1.2L; essential part for pump replacement jobs.	5	€25.00
Battery to starter cable, T2/T25/K.Ghia electrical fitment	11	€17.50
Exhaust mounting kit; universal 1.2–1.6cc generic OEM specification.	2	€17.50
Ignition switch 6-pin electrical component.	1	€17.50
Ignition lock with keys and rosette; OEM complete assembly.	3	€15.00
Glove box lock with original keys included.	3	€15.00
Complete exhaust mounting kit VW-35019; top-quality generic assembly.	1	€15.00
17.5mm rear wheel cylinder for T1 models, commodity brake part.	2	€14.50
Brake light switch 2-pin OE-spec, electrical replacement component for classic V	1	€13.00
Metal fuel tank cap 70mm 1971-1973; period-specific early Bay fitment.	9	€12.50
Bonnet cable 1700mm; engine hood release assembly.	1	€12.00
White grab handle interior trim for door pillar mounting.	11	€12.00
Foam gasket pair for heater channel to body connection.	1	€12.00
Brake pedal return spring LHD 10-pack, consumable replacement kit.	43	€11.00
OE VW clutch and brake pedal pad rubber for authentic restoration.	2	€11.00
Fuel tank outlet pipe with integrated filter; clean fuel delivery from tank.	2	€10.70
Chrome window winder with black knob; classic style.	2	€10.00
Early Beetle 70mm metal fuel tank cap; period-correct restoration accessory.	3	€10.00
Expanding nut grab handle fastener 5-pack.	6	€10.00
Clutch operating shaft, OEM-equivalent component.	2	€10.00
Stone chip underseal black 500ml for undercarriage rust and damage protection.	6	€10.00
Fan shroud-to-heater flex hose plastic 50x270mm, rubber ducting.	2	€10.00
Ivory knob window winder handle early Beetle style.	4	€9.00
Vintage window regulator handle; interior restoration trim	6	€9.00
Black hand grab strap; interior support trim, standard fitment across models.	16	€8.50

ITEM	QTY	RETAIL
Front wheel hub center cap; OEM trim piece	17	€7.60
Pre-'65 front hub grease seal; original OEM specification part	18	€7.60
White grab handle strap for door pillar.	5	€7.50
Compact ATE brake-pad quick kit for disc brakes.	1	€7.50
Hella window winder handle; VW commodity hardware.	1	€7.50
H4 60/55W headlamp bulb 12V; standard automotive replacement.	4	€6.50
Hub cap springs with rivets single wheel; small metal retention component.	3	€6.50
Heater cable for T1 Beetle and 1302 1964–1972.	1	€6.00
Fuel filler neck rubber boot seal; prevents fuel leaks and corrosion.	1	€5.85
Bonnet release cable for Beetle, Type 3, and Ghia models.	1	€5.70
Inner front wheel bearing for 68 and later models.	8	€5.50
Retaining strap for rear seat backrest pair.	15	€5.00
Parking-brake cable bracket assembly.	7	€5.00
Rear heater cable for T1 Beetle 1964–1972.	13	€5.00
Rear seat rubber stop providing cushioning and positioning support.	9	€5.00
Heat exchanger mounting kit universal left/right, hardware fastener set.	2	€5.00
Heater hose connector pipe to exhaust heat exchanger, metal/rubber.	2	€4.85
Hella H4 headlamp bulb 60/55W 12-volt; standard retail.	4	€4.75
White assist strap and coat hanger cover; interior trim, budget-friendly.	5	€4.50
Three-pin brake light switch; chassis electrical component.	2	€4.50
Halogen headlight 45/40W P45T bulb; standard dual-filament lamp.	6	€4.50
Karmann Ghia bumper guard seal kit, 4-piece; rubber trim seals, budget set.	3	€4.02
Clutch return spring for 74-79 models.	8	€4.00
Original-design clutch and brake pedal pad set; commodity rubber.	6	€4.00
Conical spring for window winder and door handle.	2	€3.90
Wiring loom grommet, rubber seal for panel penetration.	43	€3.75
6V 21/5W BA15D dual-filament stop and tail light bulb	26	€3.00
Interior door pull knob in black for Beetle and Golf; standard replacement hardw	5	€3.00
Capless instrument panel bulb holder for 14195 bulb style lighting.	92	€3.00
Front wheel bearing oil seal, drum brake models, OEM-spec. 321501641	33	€3.00
Wheel cylinder bleeder valve nipple, small precision fastener.	30	€3.00
Wheel bolt M12x1.5x13 steel; single fastener commodity used condition.	26	€3.00
1K-ohm spark plug connector; reproduction suppressor cable terminal.	5	€3.00
Chrome-look white flash indicator bulb for classic automotive styling	16	€2.50
White sun visor clip interior trim component.	4	€2.50
Headlight control knob for steel dash; 1966 and later models.	15	€2.50
Stainless spring clip hose clamp for heater and filler hoses.	10	€2.50
Electrical switch contact for interior light door and handbrake functions	2	€2.50
Chrome bumper bolt 8x31mm, OE specification	20	€2.40
2-pin brake light switch plug, German electrical connector.	2	€2.03
Door lock knob guide for Golf and VAG interior hardware.	3	€2.00
Dual-purpose rubber stop for fuel filler door and glove box.	25	€1.50
Capless panel light bulb 12V 1.2W with specialty W2x4.6D wedge base.	6	€1.50

ITEM	QTY	RETAIL
Interior door lock knob; classic trim hardware.	68	€1.25
Side lamp bulb 12V 4W with base 9S connector.	7	€1.25
Window winder handle screw, standard fastener for interior trim.	494	€0.50
Black window winder and door handle escutcheon trim	50	€0.37

TOTAL BUNDLE RETAIL VALUE

€34,770

386 lines · 4,589 units
Offers invited on the whole bundle

Pricing & VAT: figures are independent retail valuations in EUR. Sold privately, so no VAT is added to the purchase price. Trade buyers are welcome to enquire. The bundle is offered for clearance and buyers are invited to make an offer on the whole lot.